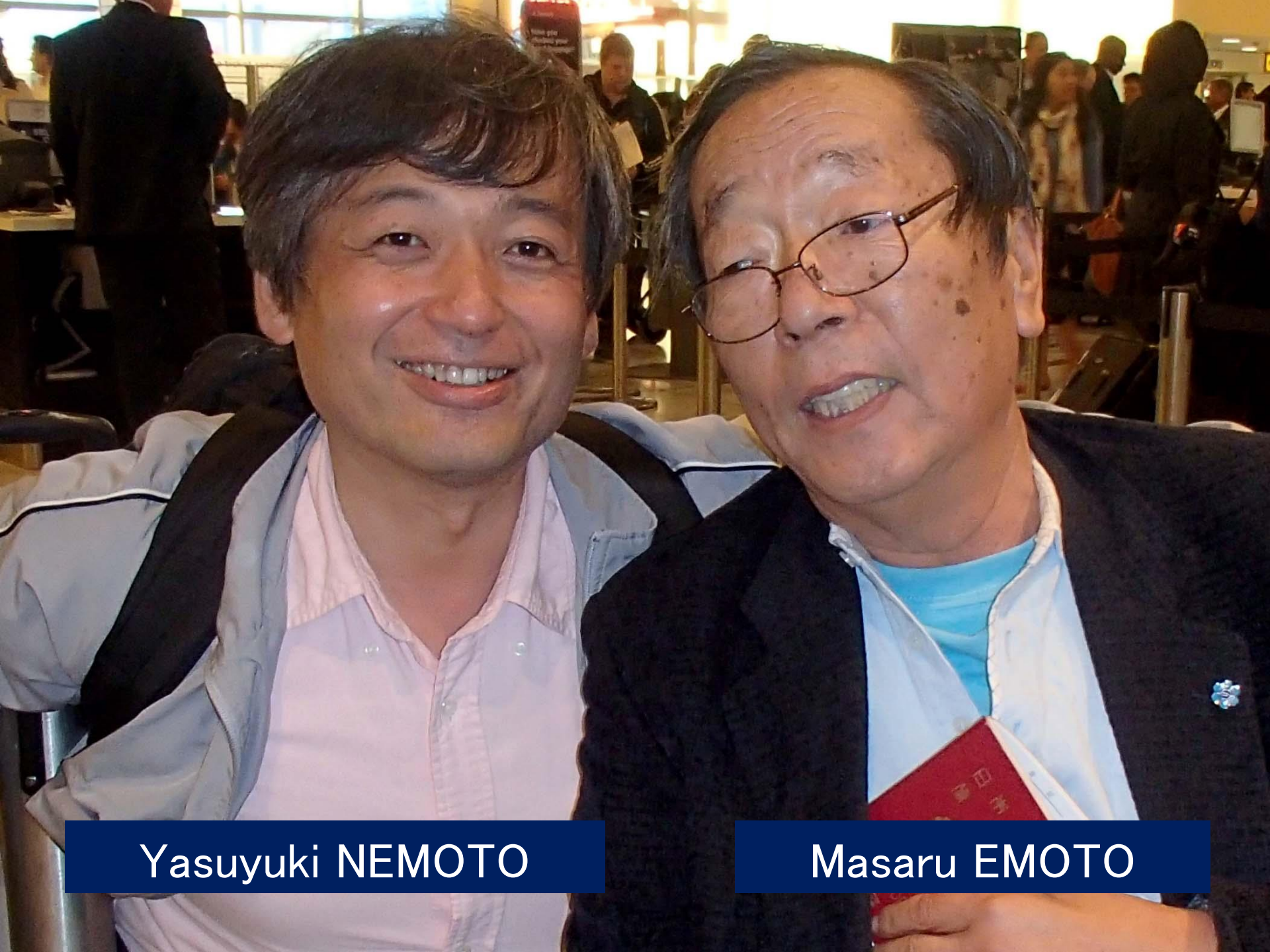


# **“Message from Water” and Science**

**The 9th Annual Conference on the Physics,  
Chemistry and Biology of Water  
October 9-12, 2014, Bulgaria**

**Yasuyuki Nemoto**

**Director of IHM General Institute  
(On Behalf of Dr. Masaru Emoto)**

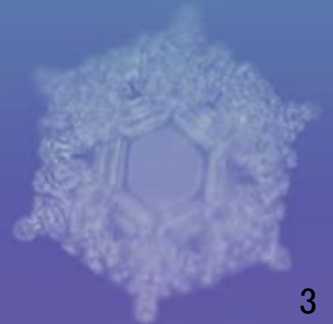


Yasuyuki NEMOTO

Masaru EMOTO

# **HADO Counseling with HADO water**

**(HADO = vibration)**



# MRA

## Magnetic Resonance Analyzer

Invented by  
Ronald J.  
Weinstock



Dr. Emoto started to import this MRA machine  
into Japan in 1987.



**Demonstration of HADO Counselling using MRA  
(e.g. Code for Immunity is B222)**



0.00  
ADDRESS

COARSE VOLUME

FINE TONE

AUX CUT-OFF

INTENSITY CARRIER

DIRECT /  INDIRECT

MODULE ADDRESS

$10^2$   $10^1$   $10^0$

MRA 3

Detailed description: This is a control panel for a piece of scientific equipment. It features a digital display at the top showing "0.00" in red. Below the display are two columns of four rotary knobs each. The knobs are labeled: COARSE, FINE, AUX, INTENSITY in the left column; and VOLUME, TONE, CUT-OFF, CARRIER in the right column. Each knob has a scale from 1 to 10. Below the knobs is a selector switch with "DIRECT" and "INDIRECT" positions. To the right of the knobs is a section labeled "MODULE ADDRESS" with three buttons labeled  $10^2$ ,  $10^1$ , and  $10^0$ . At the bottom right, the text "MRA 3" is visible in a stylized font.



**ADJUST**      **MULTI CASSETTE**      **RESONANCE CODE**

CALIBRATE    SOUND  
COARSE      VOLUME  
FINE        TONE  
AUX         CUT-OFF  
INTENSITY    CARRIER

ADDRESS      0.00

MODULE ADDRESS      BASTER CLEAR      CURSOR

10P   10P   10P      [ ]      [ ] [ ]

**MRA 3 Millennium**      INTERRUPT

• DIRECT / INDIRECT •

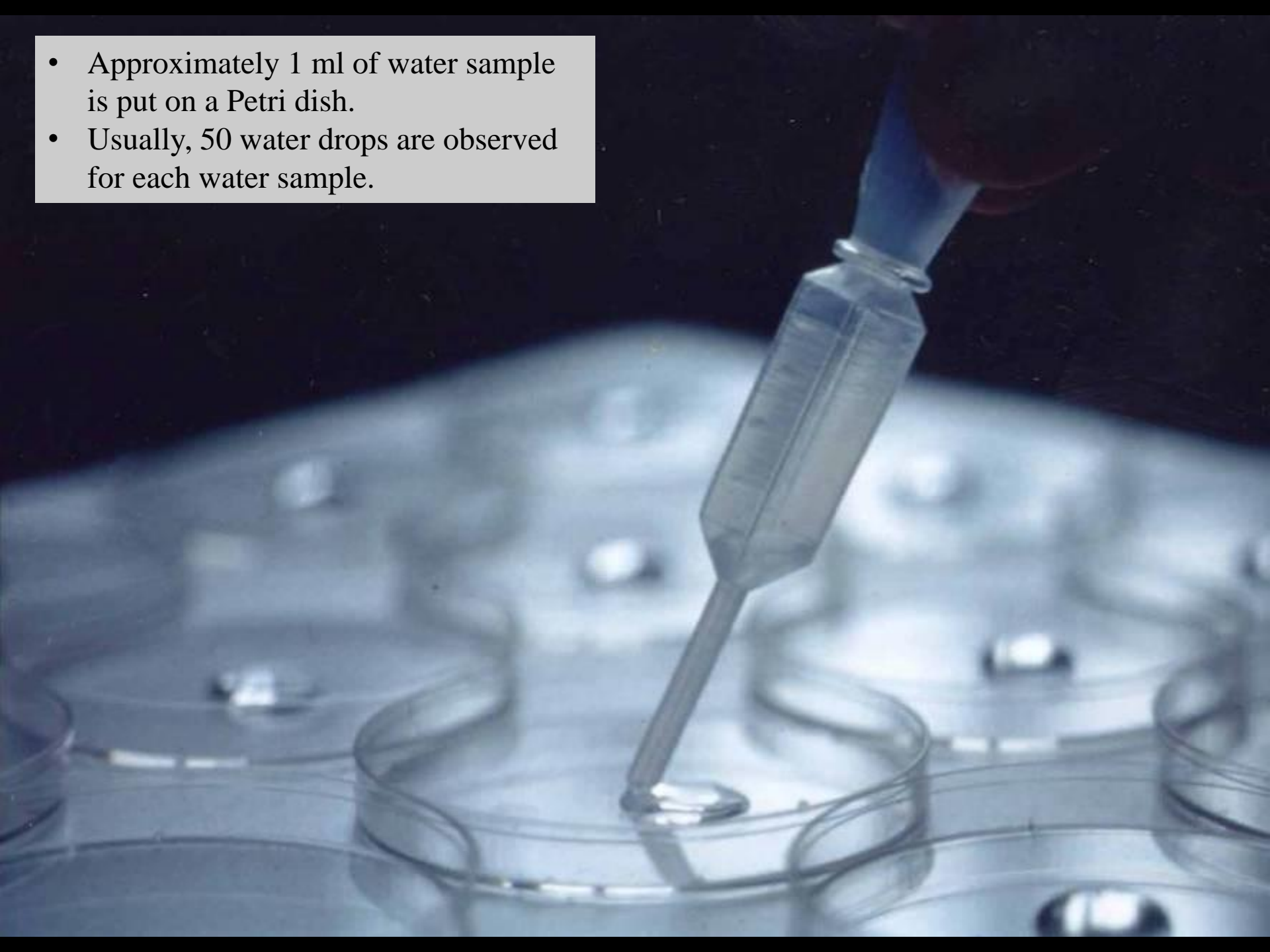
- **Dr. Emoto could treat more than 10,000 clients using this method.**
- **However, people would not recognize invisible things such as the information contained in **water**.**



- Dr. Emoto was looking for a way to make the invisible things **visible**.



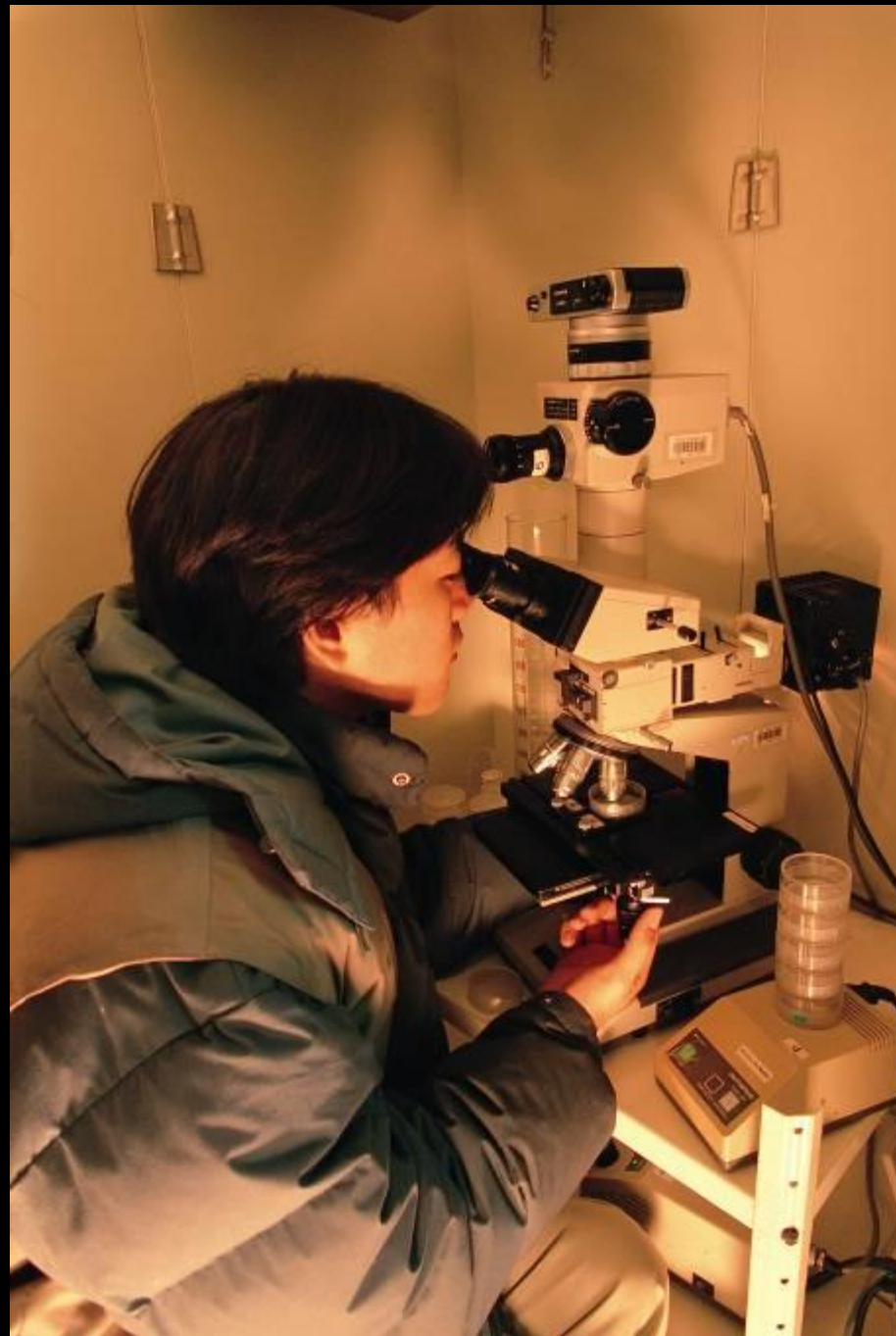
- Approximately 1 ml of water sample is put on a Petri dish.
- Usually, 50 water drops are observed for each water sample.



- Petri dishes are placed in a refrigerator for 3 hr to overnight to freeze the water drops.



- Microscope and a researcher using it.

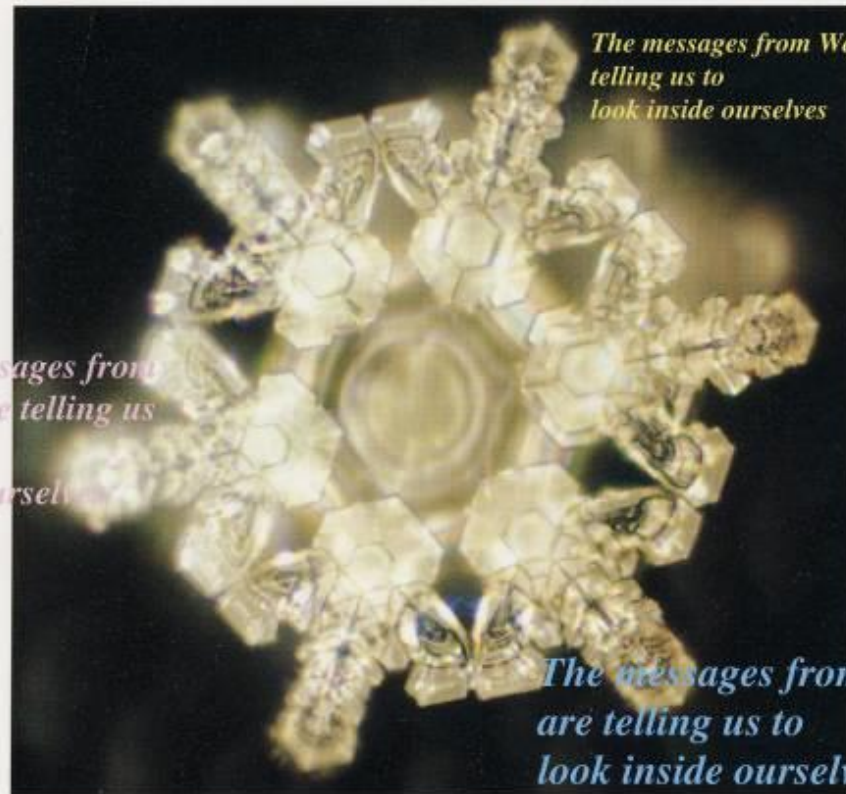


# First Water Crystal Photograph of Micro-clustered Water (1994)



World's first pictures of frozen water crystals

# Messages from Water



*The messages from Water are  
telling us to  
look inside ourselves*

*The messages from  
water are telling us  
to look  
inside ourselves*

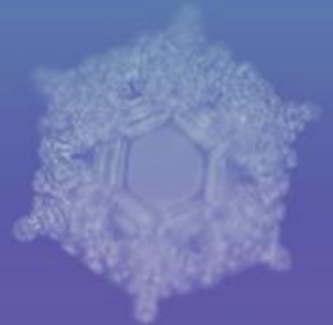
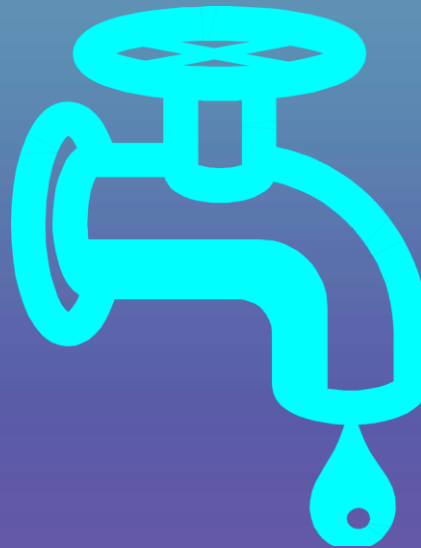
*The messages from water  
are telling us to  
look inside ourselves*

Masaru Emoto (Doctor of Medicine alternativa) / I.H.M. General Research Institute

HADO Kyoikusha Co., Ltd.

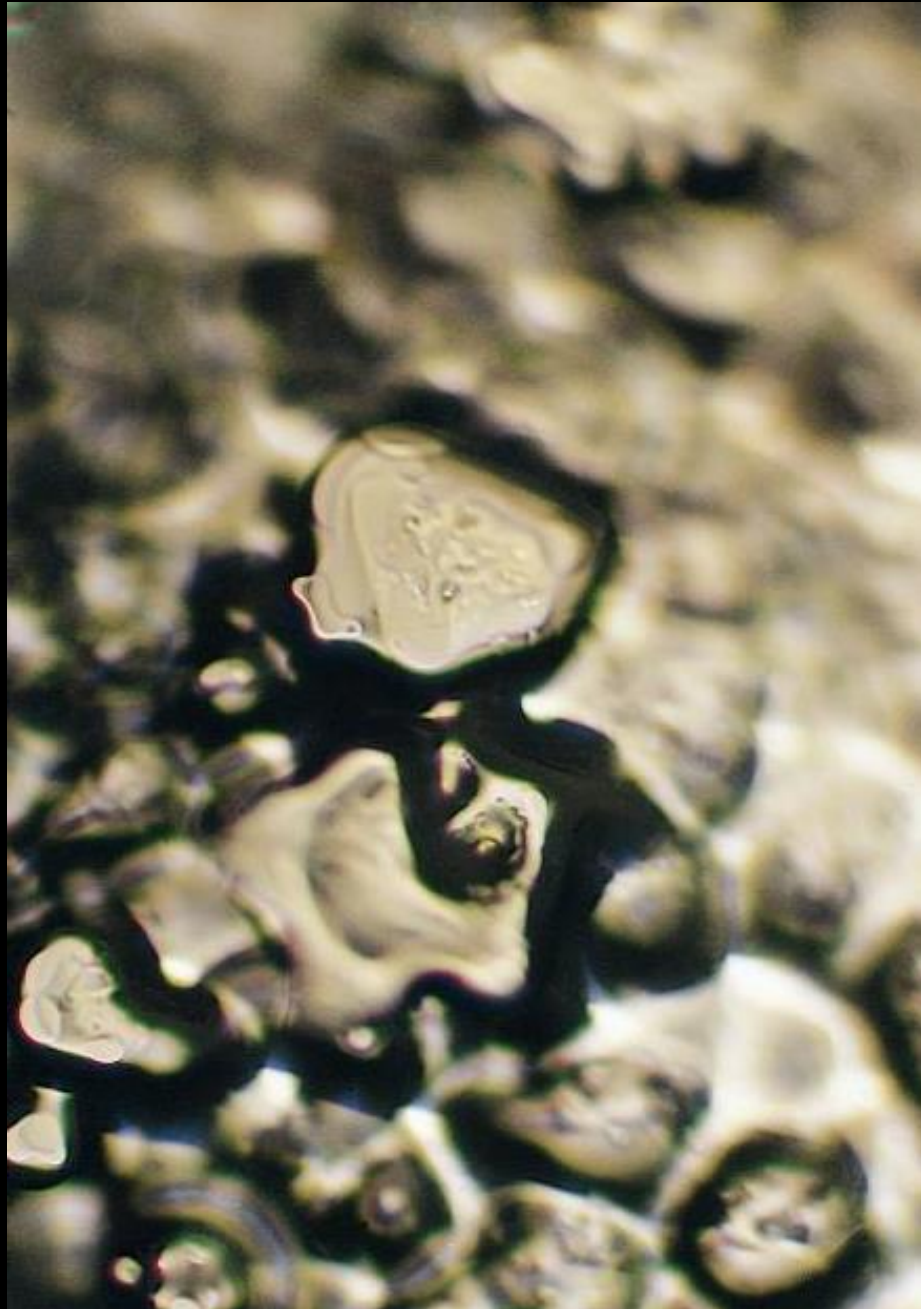
(1999)

# Tap Waters in the World





# Tap Water in Tokyo, Japan



# Tap Water in London, UK



# Tap Water in Paris, France



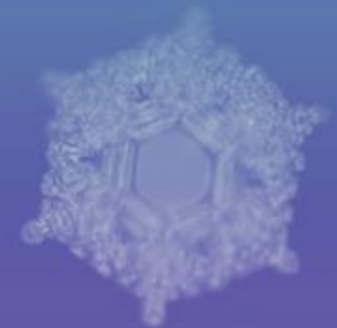
# Tap Water in Berlin, Germany



# Tap water from Vancouver, Canada



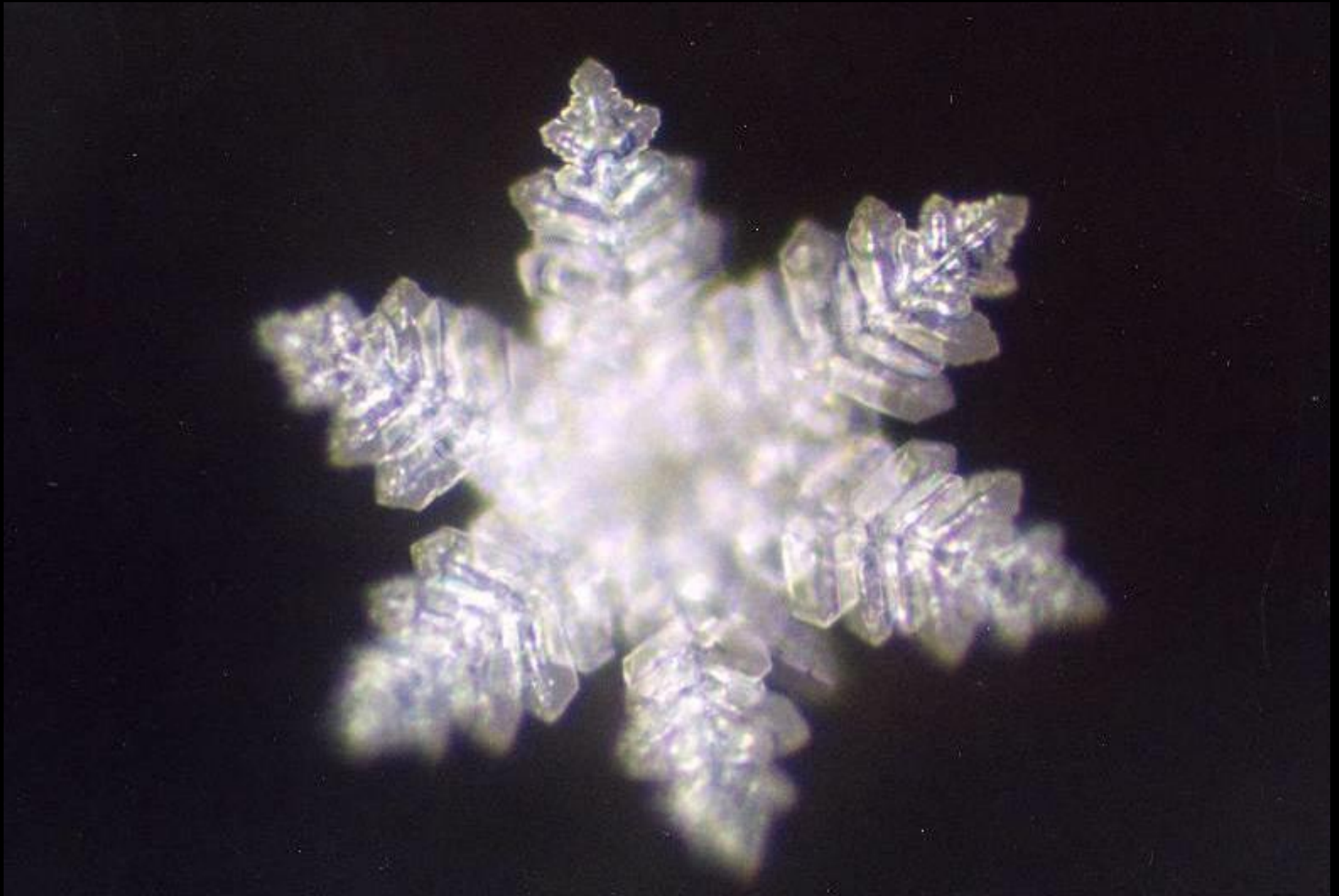
# Natural Waters in the World



# Sanbuichi Spring Water, Yamanashi Prefecture in Japan



# Lake Maggiore in Switzerland

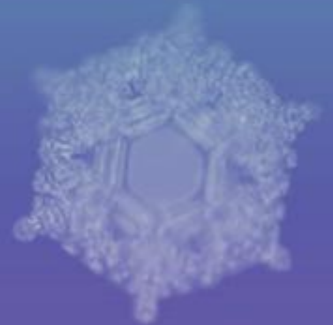




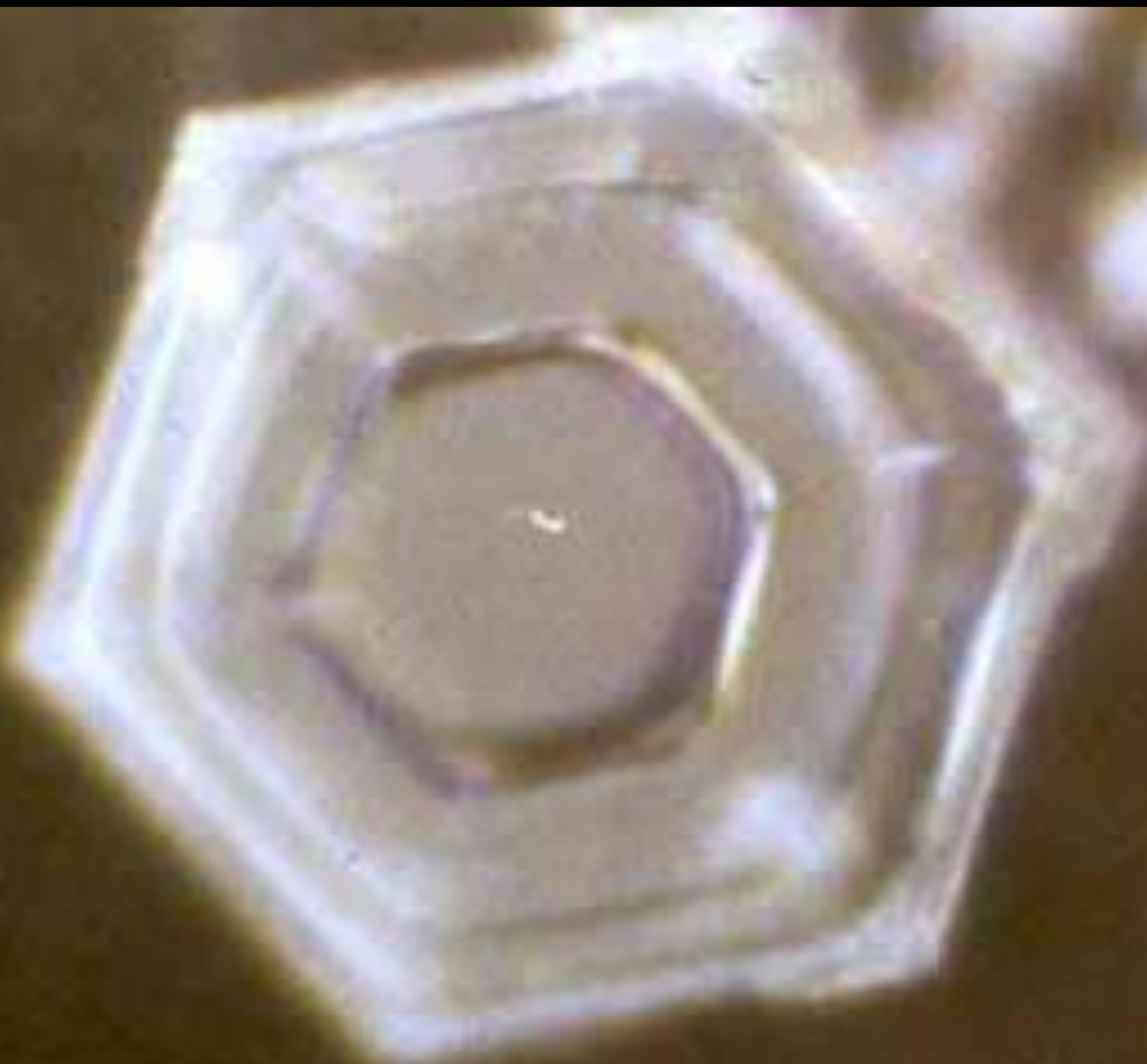
# Ice of the Antarctica



# Effects of Music







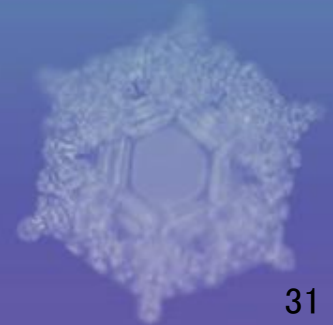
# La Novia

(2 min 36 sec)

This water crystal movie is  
dedicated to Mary or Maria.



# Effects of Images

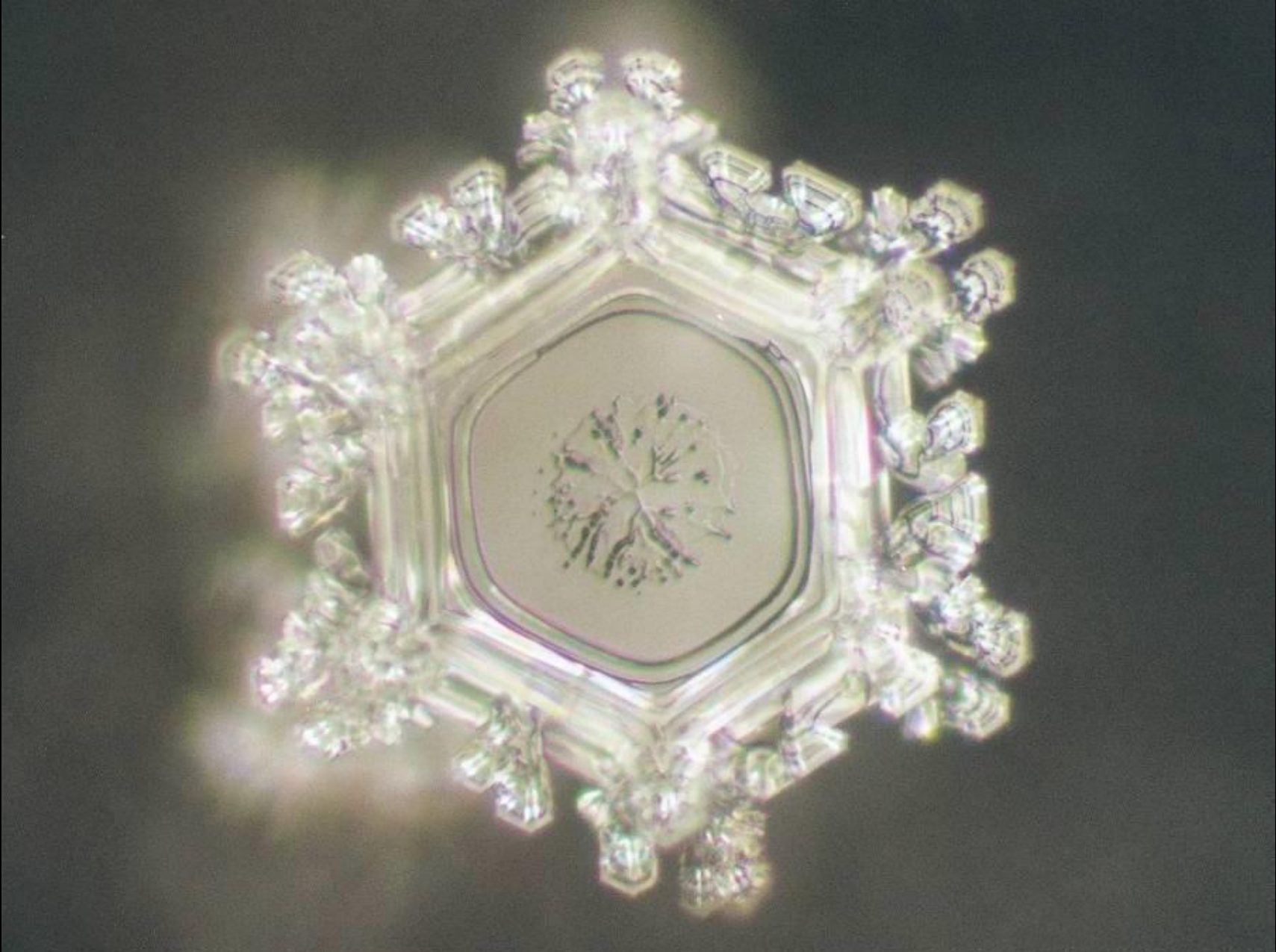


Water is exposed to a photograph of dolphins.





Water crystal of water exposed to a photograph of dolphins.



Water is exposed to a photograph of an elephant.



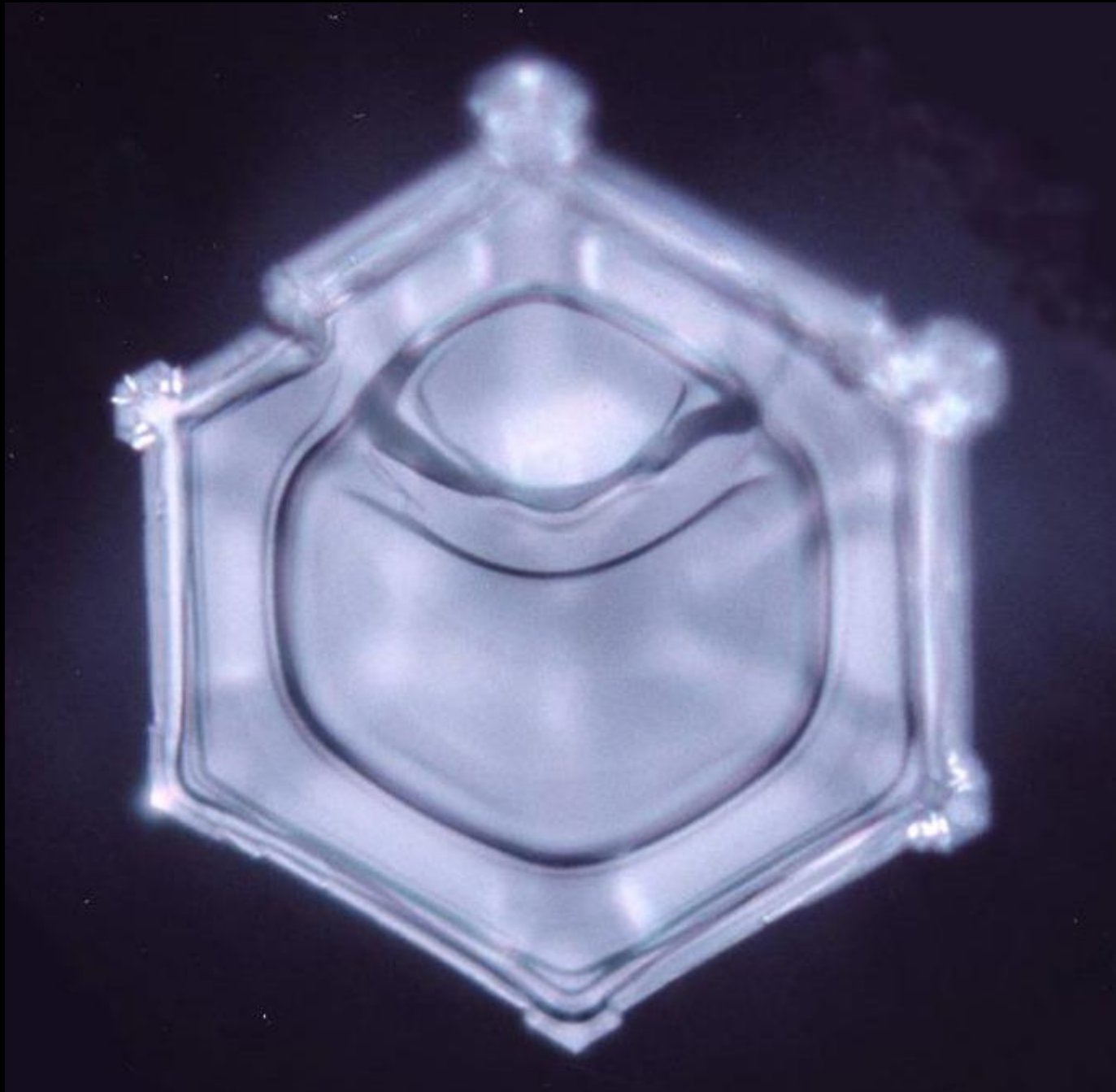
Water crystal of water exposed to a photograph of an elephant.



Water is exposed to a photograph of the Izumo Shrine in Japan.



Water crystal of water exposed to a photograph of the Izumo Shrine.



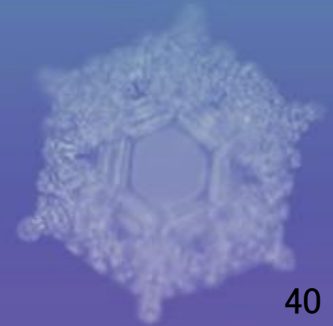
Water is exposed to the heart mark.



Water crystal of water exposed to the heart mark.



# Effects of Words





Water is exposed to either “You fool” or “Thank you” in Japanese for 24 hrs.

You fool

Thank you

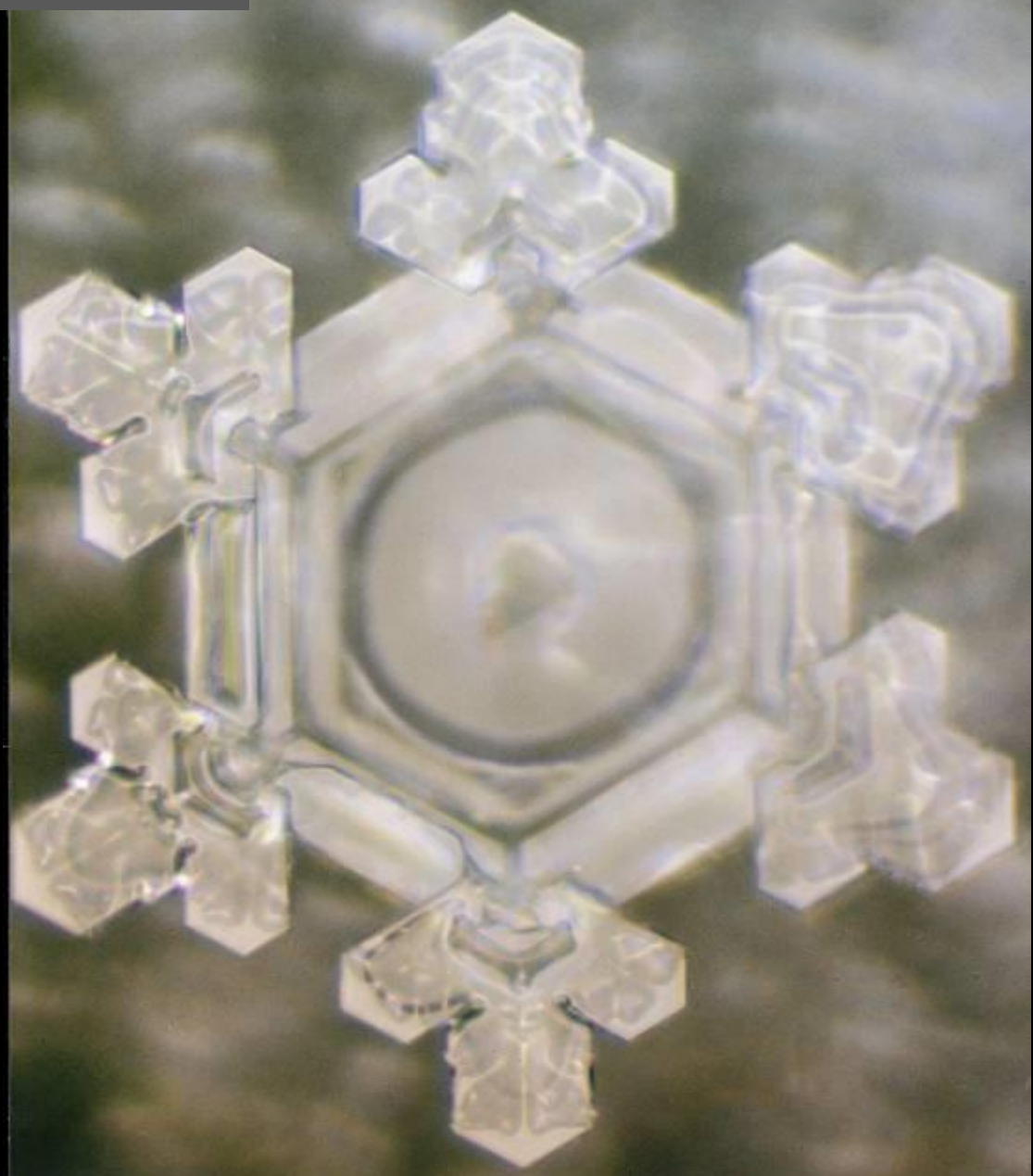


“You fool” left

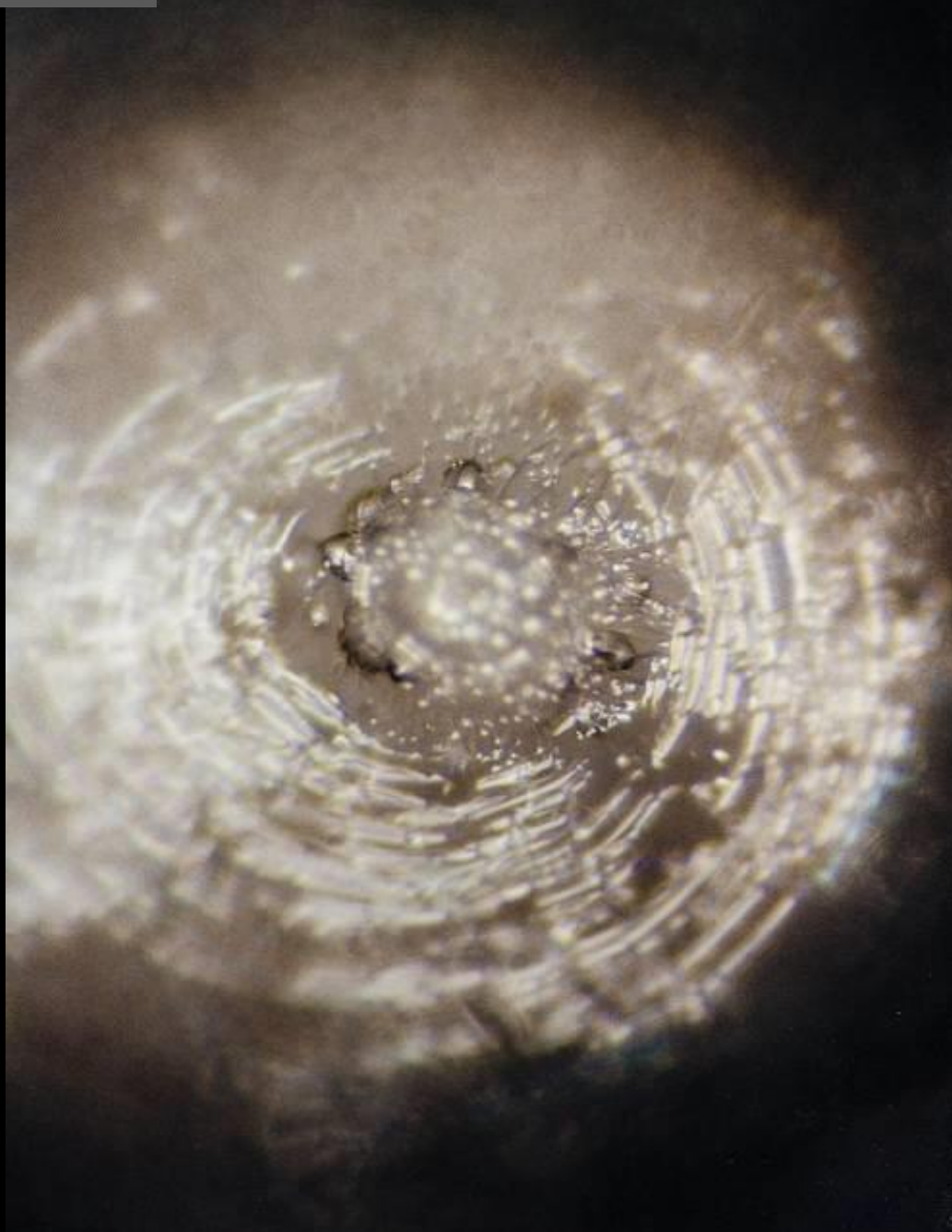


“Thank you” right

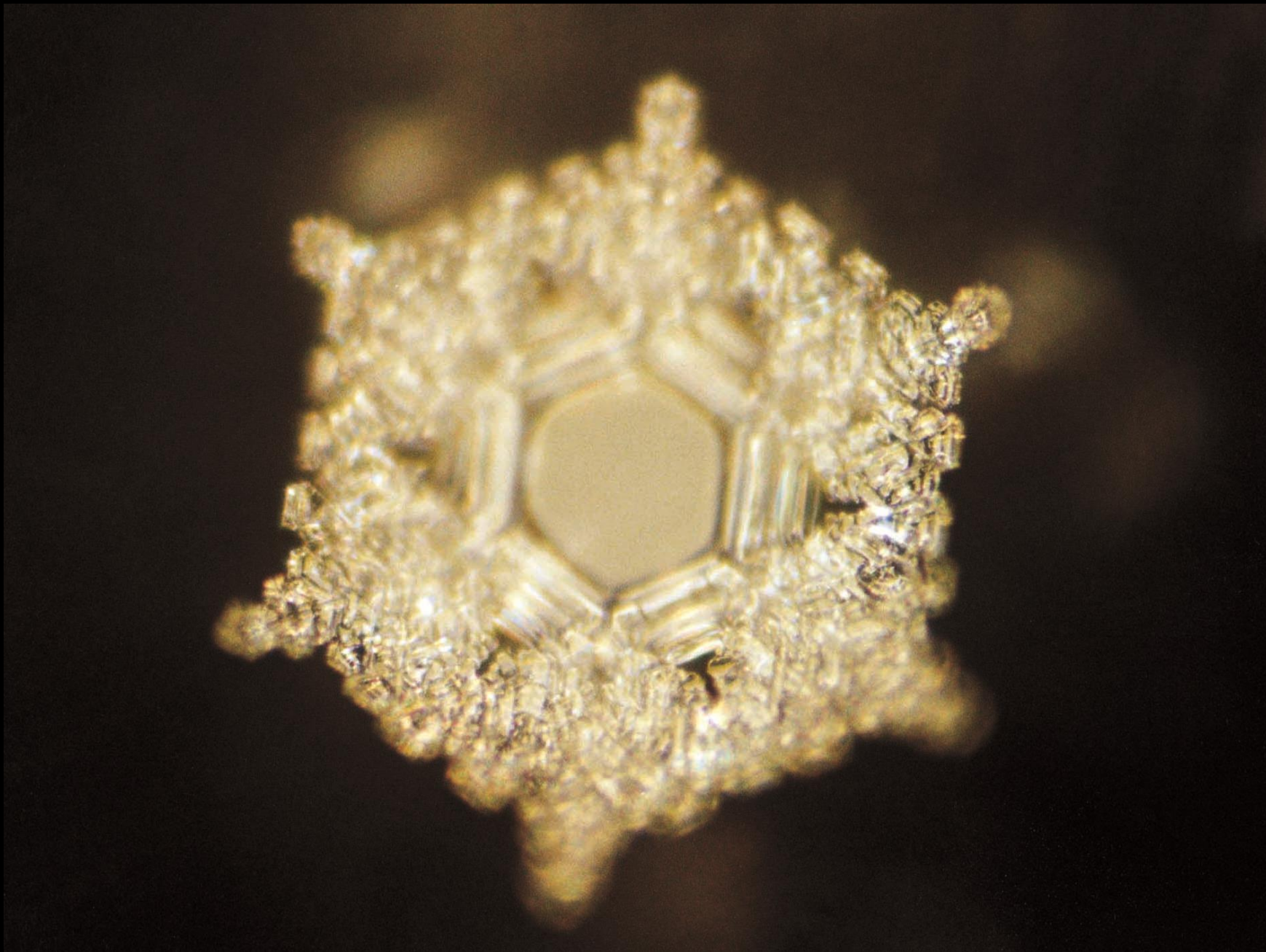
Thank you in Japanese



**You fool in Japanese**



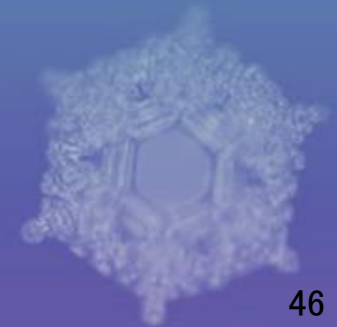
**“Love & Gratitude” (the most beautiful water crystal so far)**



# Message from Water

- It seems that **good water** shows beautiful water crystals, while **bad water** does not show any crystal at all.
- **Water** can be changed by music, images, words and prayers.
- **Water** likes LOVE & GRATITUDE.

# Complete Survey



- We usually observe 50 to 100 water crystals from one water sample.
- For educational purpose, we usually choose a representative one from them (e.g. “Messages from Water”).
- Because of this situation, there is a criticism that we would have chosen intentionally those photographs which correspond to what we would like to say.

# ORGANO Pendant



## Josef Bauer, Cinderella GmbH

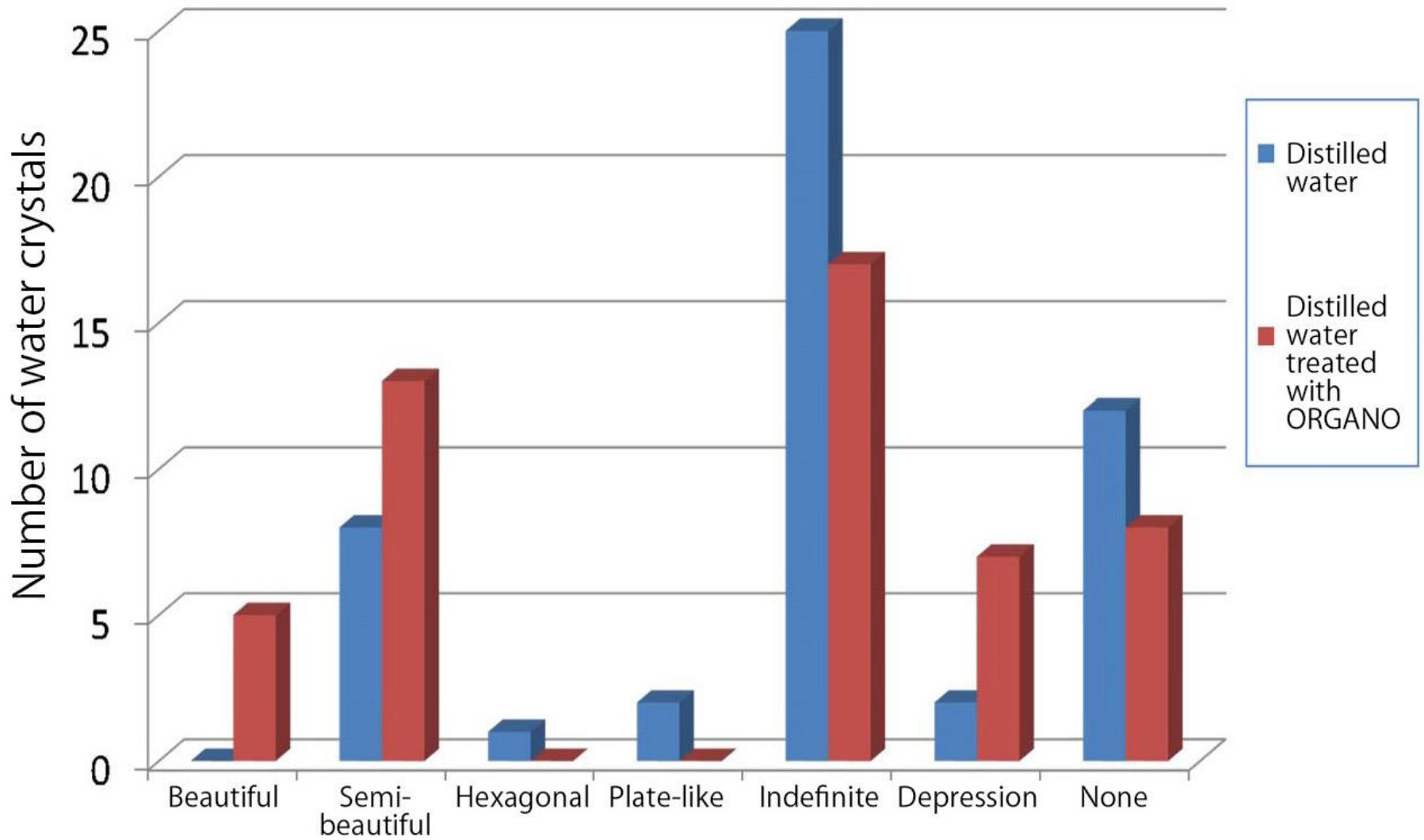
- Strengthen the energetic field of a person and protect him/her from negative energies.
- Its outside cover is made of a metal; inside it contains a powder of rock crystal into which positive energies have been transferred.
- He had suffered for years from illness which his doctor diagnosed as multiple sclerosis (MS).
- He succeeded in curing his disease using this ORGANO pendant.







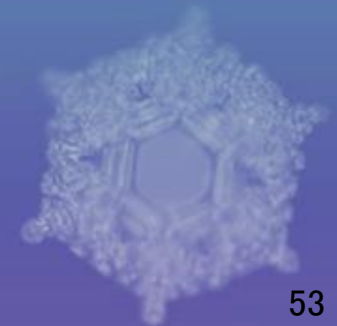
# Classification of the shape of water crystals



Most Beautiful ← → No Crystal

			Number		Score	
		Unit Score	Control	Treated by ORGANO	Control	Treated by ORGANO
Beautiful	Beautiful ↑	100	0	5	0	500
Semi-beautiful		80	8	13	640	1040
Hexagonal		60	1	0	60	0
Plate-like		40	2	0	80	0
Indefinite		30	25	17	750	510
Depression	None ↓	20	2	7	40	140
None		10	12	8	120	80
<b>TOTAL</b>			<b>50</b>	<b>50</b>	<b>1690</b>	<b>2270</b>
<b>Average Score</b>					<b>33.8</b>	<b>45.4</b>

# Double-Blind Experiment



---

ORIGINAL RESEARCH

---

DOUBLE-BLIND TEST OF THE EFFECTS OF DISTANT INTENTION ON WATER  
CRYSTAL FORMATION

Dean Radin, PhD,<sup>1#</sup> Gail Hayssen,<sup>1</sup> Masaru Emoto, BA,<sup>2</sup> and Takashige Kizu, BA<sup>2</sup>

---

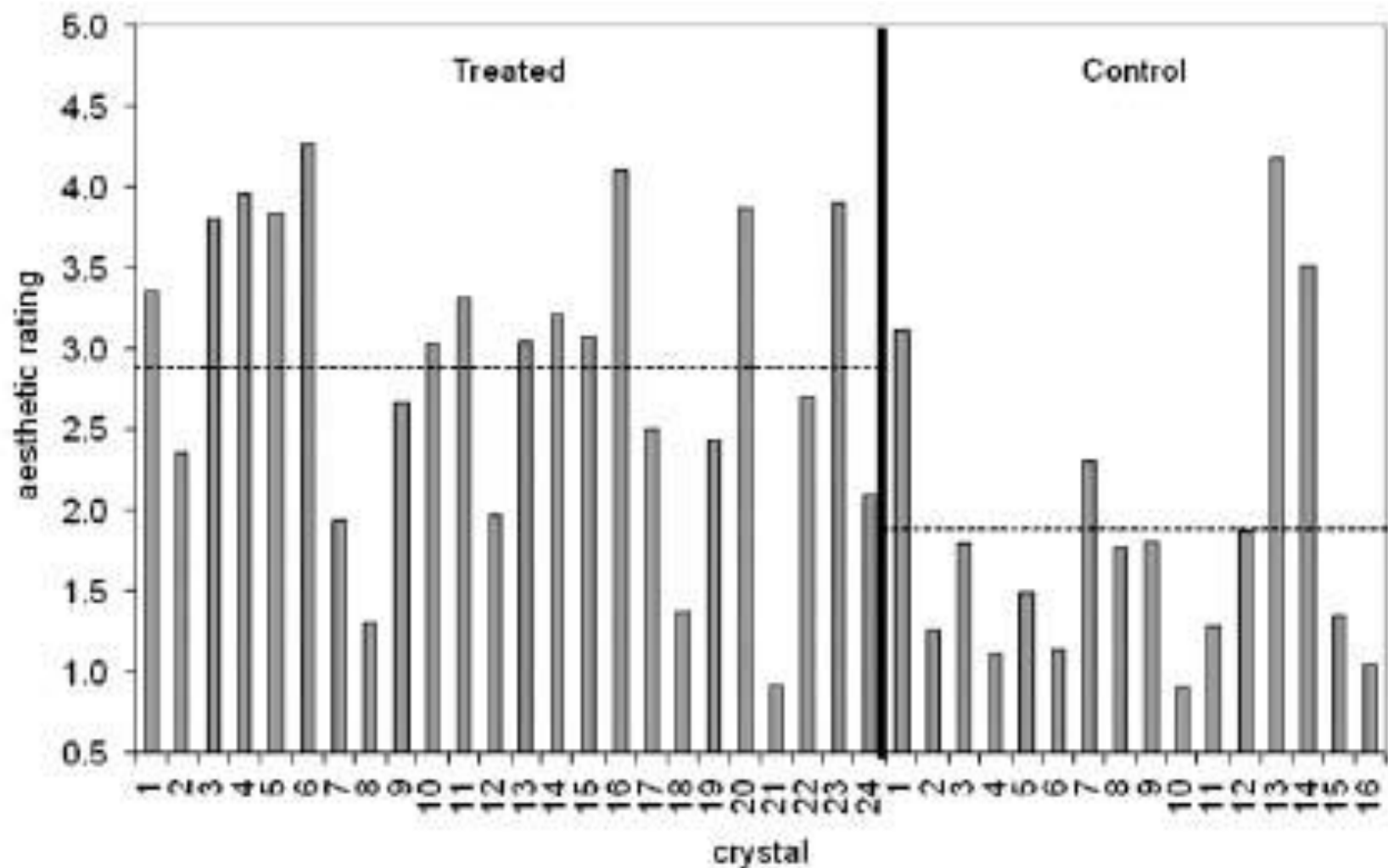
*EXPLORE (2006) Vol.2 No.5 pp.408-411*

Dean Radin, Gail Hayssen, Masaru Emoto & Takashige Kizu

- Prayer was sent to 2 bottles of water placed in Dr. Radin's laboratory in California by 2,000 people who attended a water festival in Tokyo.
- 2 bottles of water which received the prayer and other 2 bottles as control were sent to Dr. Emoto's laboratory under **the blind condition**.
- Water crystal photographs (in total 40 photos) were taken and sent back to Dr. Radin.

- Dr. Radin asked 100 volunteers on his Internet site to evaluate the beauty of each water crystal photograph.
- They did not know which photograph was under which condition. So, it was **the blind condition**.
- The scale of beauty was from 0 to 6. 6 means the most beautiful.





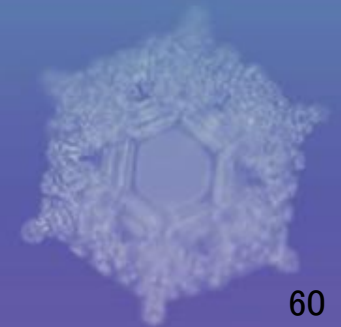
**Figure 1.** Mean aesthetic ratings by 100 independent judges blind to the condition of each image, for 40 crystals blindly identified by an analyst. Grand means for the 24 treated and 16 control samples are identified with dashed lines.

**Table 1.** Comparison of the Grand Mean Ratings for Aesthetic Appeal of the Treated vs Control Crystals by 100 Independent, Blind Judges

Aesthetic Appeal Ratings	Treated	Control
Mean	2.87	1.88
Variance	0.89	0.91
Observations	24	16
Pooled Variance	0.90	
Hypothesized mean difference	0	
df	38	
<i>t</i> test	3.27	
<i>P</i> value, one-tail	0.001	

- The aesthetic score of the treated waters was 2.87, while that of the control was 1.88.
- P value was 0.001. The result was statistically significant.

# **Recent Connection with Scientific Society**



# Dr. Pollack talks about Dr. Emoto's findings on an internet radio program (July 10, 2014)



## New Hypotheses on Influence of Emotions on Water Proposed on Sharon Kleyne Hour

Water Researcher Gerald Pollack Discusses with Bio Logic Aqua Research Founder Sharon Kleyne How Fourth Phase Water May Explain Dr. Emoto's Controversial Findings.

Grants Pass, OR (PRWEB) July 10, 2014



Tweet



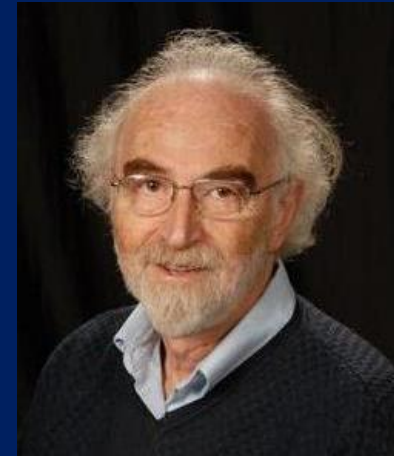
Like



+1



Share



- A new hypothesis (the 4<sup>th</sup> phase of water) by Dr. Gerald Pollack offers **the first plausible scientific explanation for Emoto's findings.**

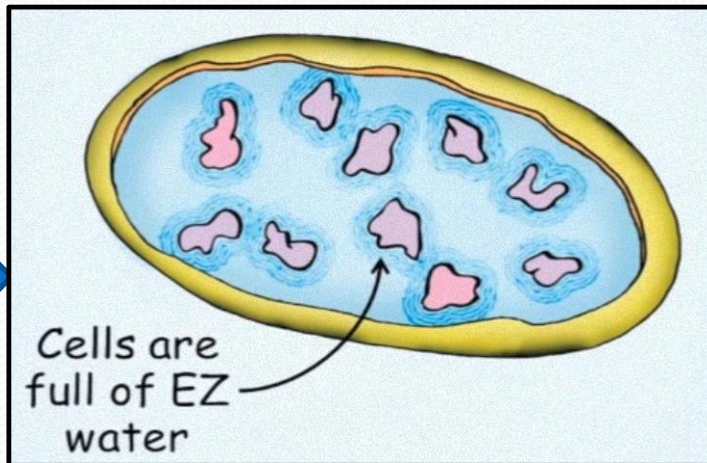
It is possible that the energy of **positive and negative emotions** affects the structure of the 4<sup>th</sup> phase of water differently. As a result, the shapes of water crystals could be changed.

# Role of Water (Hypothesis)

- Light (Infrared)
- Emotions & Thoughts
- Words & Images
- Prayers
- Healing Energy
- Psychic Power

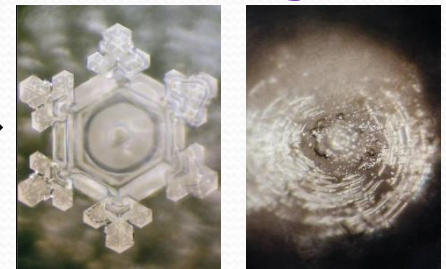
- Electric Power
- Physical Movement
- Biochemical Reactions
- Self-Healing Power
- Immunological Capacity
- Connection to Energetic Bodies

**Input**



**Output**

**Water Crystal**



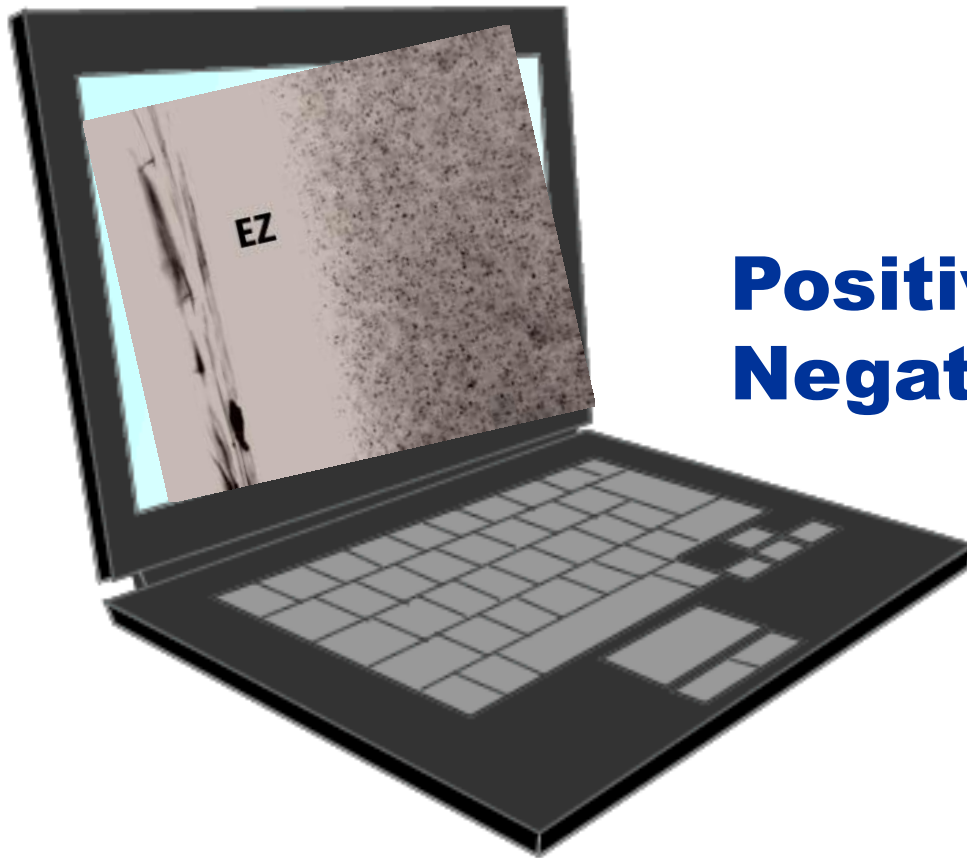
**The 4<sup>th</sup> Phase of Water  
(= Energy Transformer)**

**Message from Water**

# Conclusion

- We firmly believe that **Dr. Emoto's insight** that water can be changed by our thoughts, emotions and prayers is true.
- We think that **Dr. Pollack's findings on the 4th phase of water** may explain the phenomena described in "Message from Water".
- If some of professional scientists gathering here could find conclusive evidence to prove **Dr. Emoto's insight**, and if Dr. Emoto's work has been an inspiration for those people, we would be very happy.

# Real-Time Monitor of Emotional State using Water



**Positive or  
Negative Emotions**



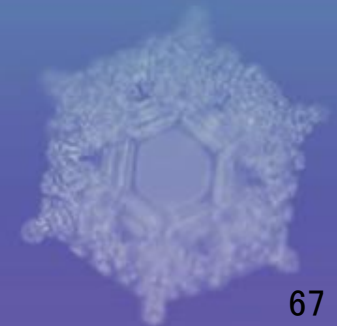


The background is a deep blue with a fine, pebbled texture. In the bottom right corner, a portion of the Earth is visible, showing continents and clouds. The text is centered in the upper half of the image.

**Thank you for  
your attention !**



# Complete Survey (2)



# 水の氷結写真による波動情報の評価

(株) I H M I H M総合研究所

所長 江本 勝  
研究員 小原 大典

## Evaluation of Hado Information by Water Crystal Photography

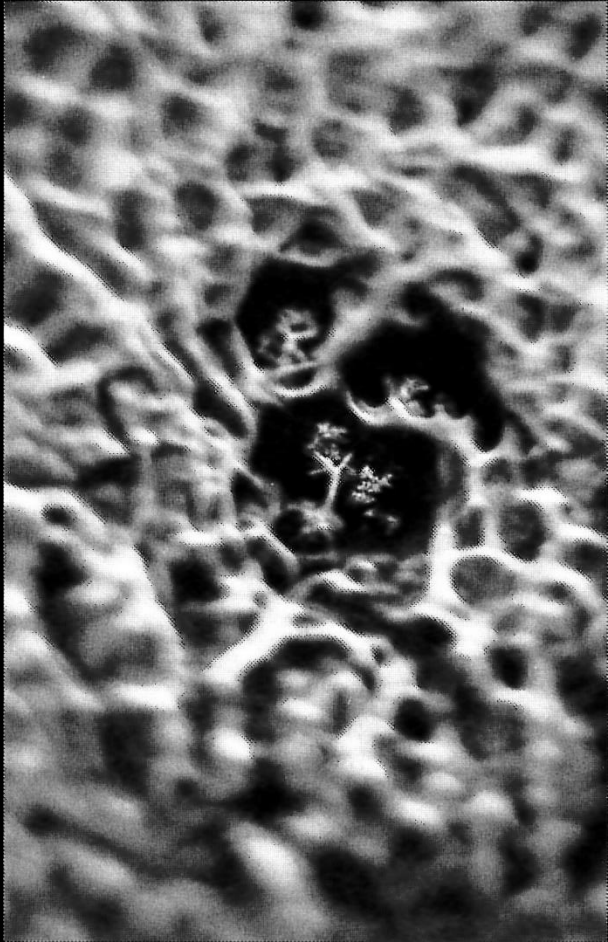
*Journal of the Subtle Energy Association in Japan*

(pp.5-10, Vol.3, No.2, 1999)

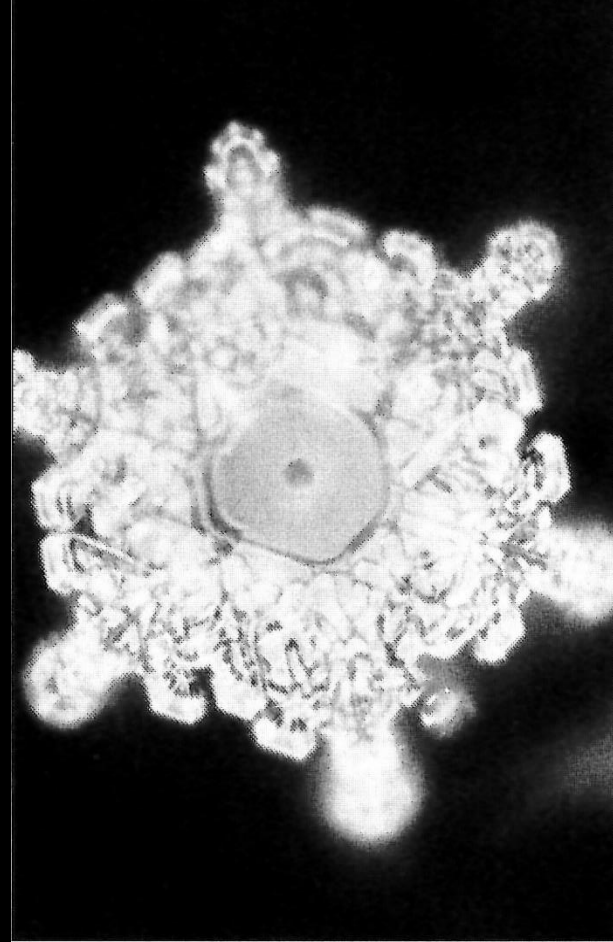
Masaru Emoto and Daisuke Obara

# Classification of Water Crystals (Example)

Score	Classification of crystal	Characteristics and explanation
100	Beautiful	Especially beautiful and symmetrical water crystal with beautiful delicate branches
90	Semi-beautiful	Beautiful and symmetrical water crystal with delicate branches
80	Hexagonal	Hexagonally shaped water crystal with no delicate branches
80	Radiated	Beautiful crystal with branches growing from the center
70	Semi-hexagonal	Hexagonal water crystal with some broken part
70	Semi-radiated	Crystal with branches growing from the center
70	Sheet-shaped	Sheet-shaped crystal
60	Lattice-shaped	Lattice-shaped crystal
60	Branched	Crystal with branches emerging from ice surface
50	Micro	Very small crystal with hexagonal, lattice-shaped or round-shaped form
50	Round	Round crystal
50	Block-shaped	Many lattice-shaped, round or indefinite crystals gathering together
20	Indefinite	Crystal with no definite shape
20	Depression with beautiful crystals	Beautiful crystals surrounding a depression
10	Depression with crystals	Less beautiful crystals surrounding a depression
0	Depression	Depression with no crystals
0	None	No crystal observed

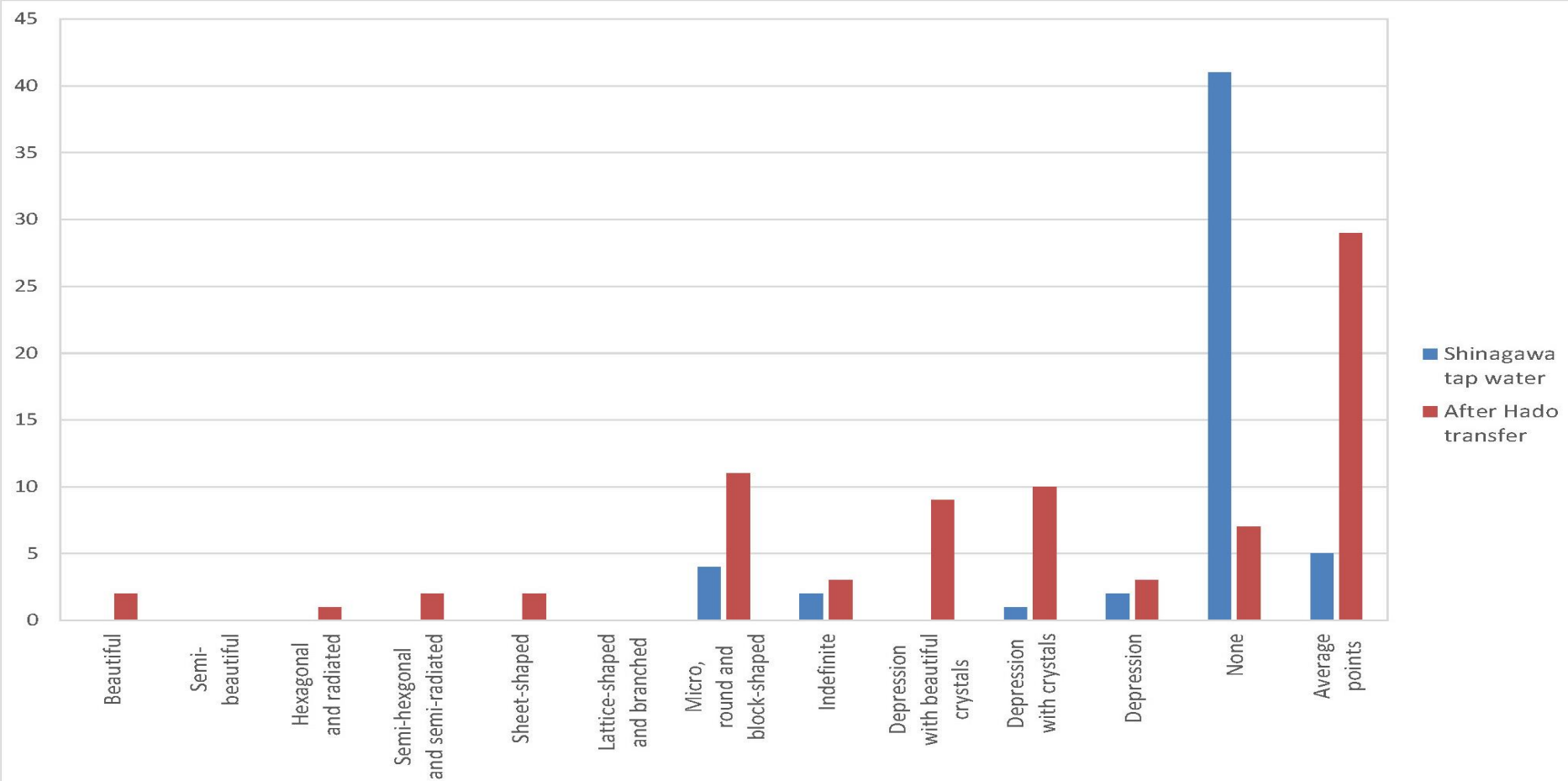


Tap water in Tokyo



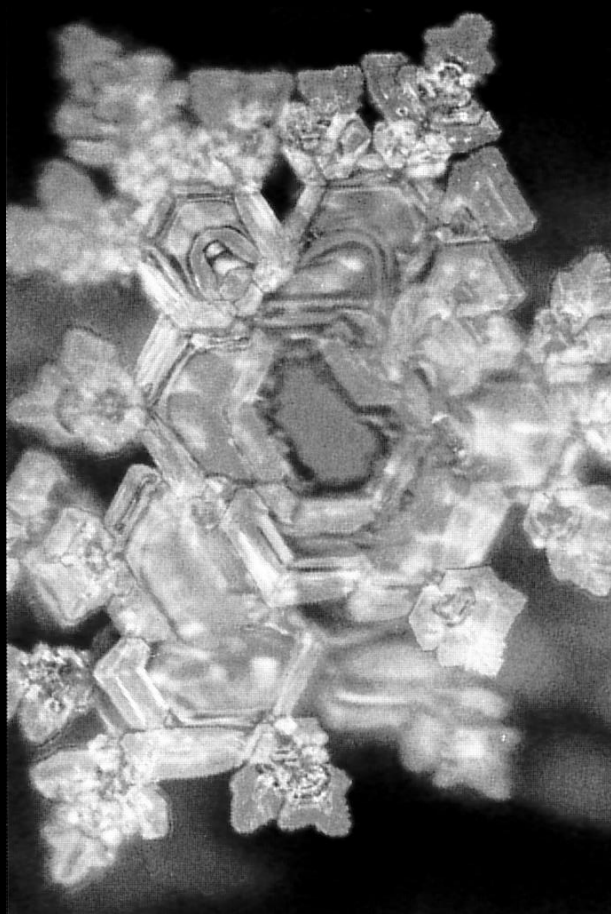
Tap water in Tokyo after the information of immunity was transferred with MRA machine.

	Beautiful	Semi-beautiful	Hexagonal and radiated	Semi-hexagonal and semi-radiated	Sheet-shaped	Lattice and branched	Micro, round and block-shaped	Indefinite	Depression with beautiful crystals	Depression with crystals	Depression	None	Average points	Total number
<b>Shinagawa tap water</b>	0	0	0	0	0	0	4	2	0	1	2	41	5.0	50
<b>After Hado transfer</b>	2	0	1	2	2	0	11	3	9	10	3	7	29.0	50

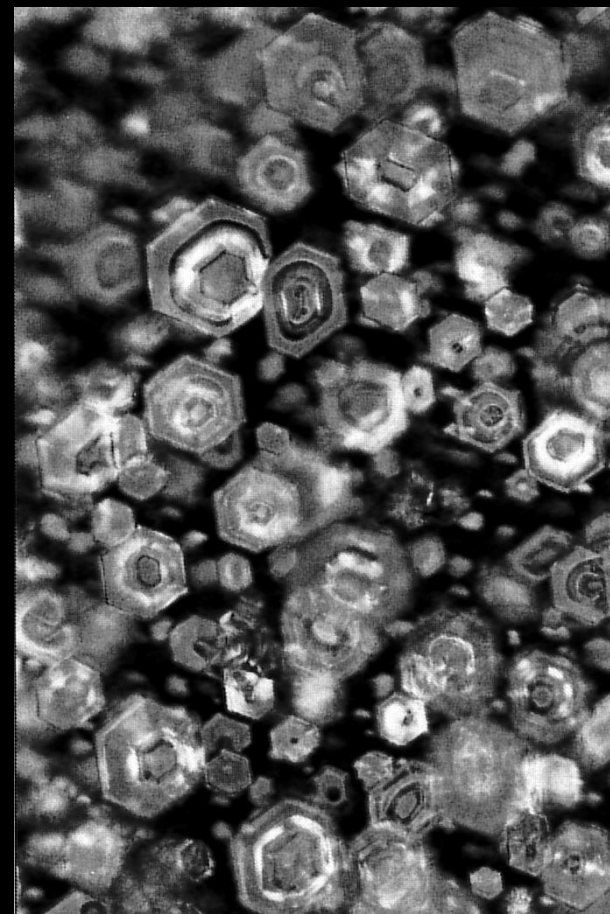




Distilled water



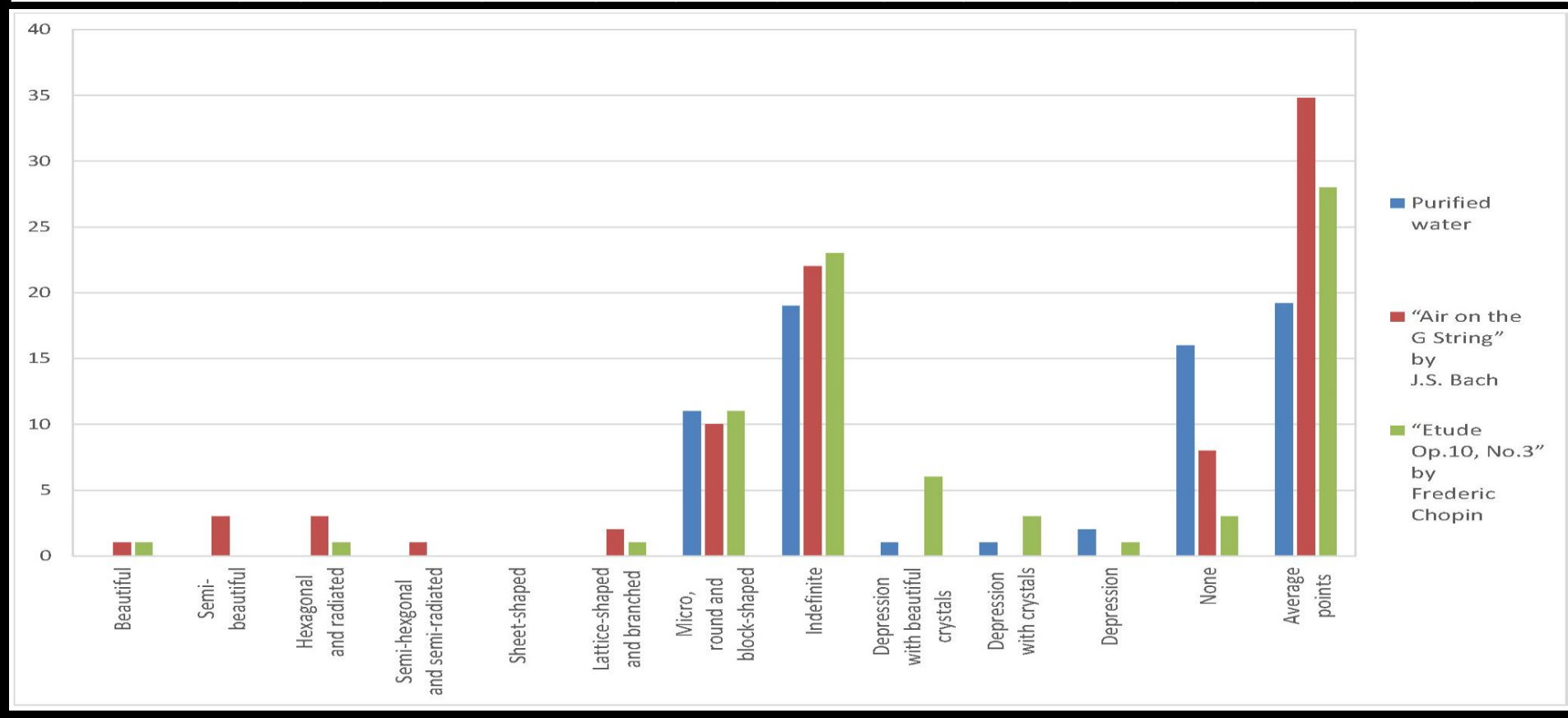
Distilled water after being exposed to "Air on the G String" by J.S. Bach



Distilled water after exposed to "Etude Op.10, No.3" by Frederic Chopin



	Beautiful	Semi-beautiful	Hexagonal and radiated	Semi-hexagonal and semi-radiated	Sheet-shaped	Lattice and branched	Micro, round and block-shaped	Indefinite	Depression with beautiful crystals	Depression with crystals	Depression	None	Average points	Total number
<b>Purified water</b>	0	0	0	0	0	0	11	19	1	1	2	16	19.2	50
<b>“Air on the G String” by J.S. Bach</b>	1	3	3	1	0	2	10	22	0	0	0	8	34.8	50
<b>“Etude Op.10, No.3” by Frederic Chopin</b>	1	0	1	0	0	1	11	23	6	3	1	3	28.0	50



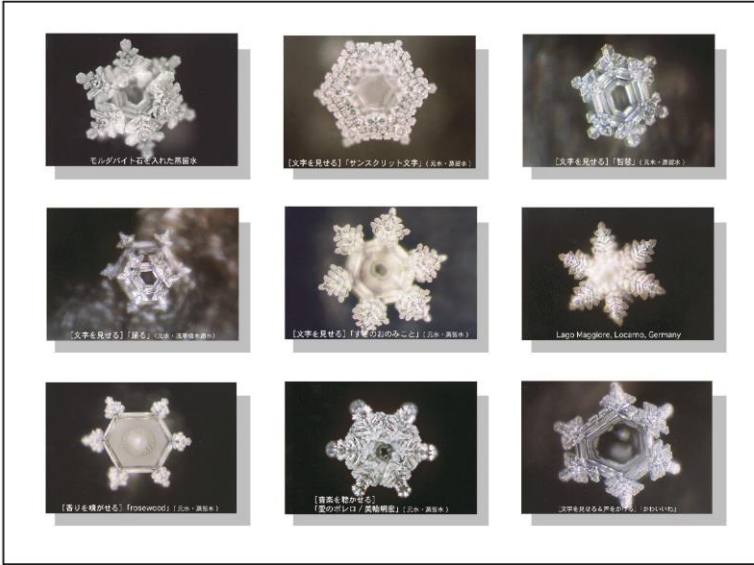
# Classification of Water Crystals (1)

## 結晶の分類について

4-1

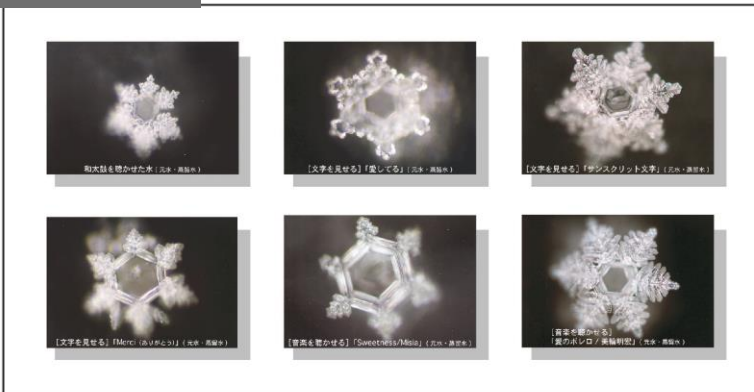
### Beautiful

・・・六角形に飾りの付いたもの。



### Semi-beautiful

結晶で傾斜しているもの。



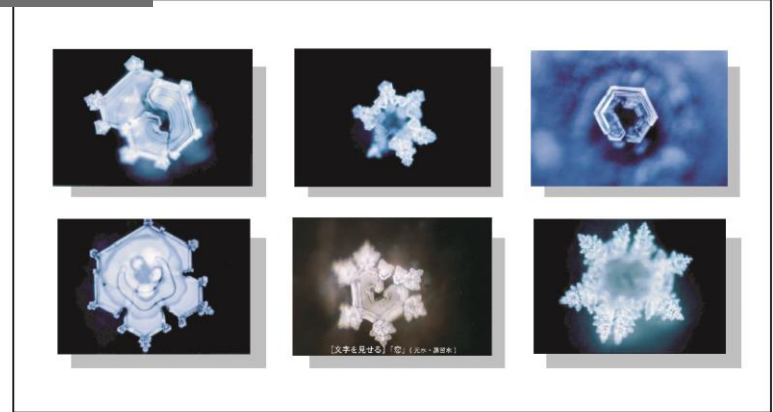
合同会社OFFICE MASARU EMOTO

## 結晶の分類について

4-2

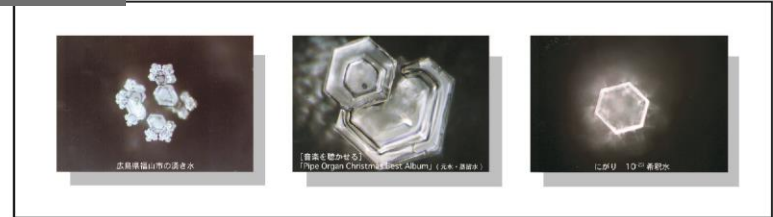
### Hexagonal

け・・・六角形の一部が欠けたりしたもの



### Hexagonal

・・・傾斜しているものも含まれます。



### Plate-like

子状・・・四角形のもの。



合同会社OFFICE MASARU EMOTO

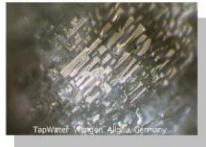
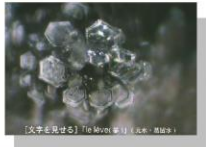
# Classification of Water Crystals (2)

## 結晶の分類について

4-3

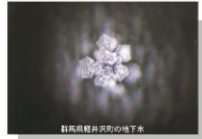
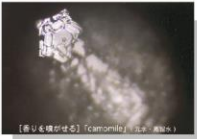
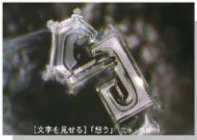
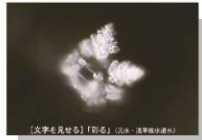
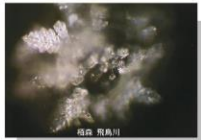
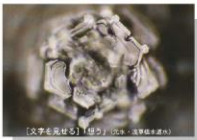
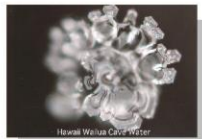
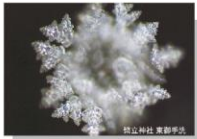
### Block

□・□・□・四角形などが全体に広がっているもの。



### Indefinite

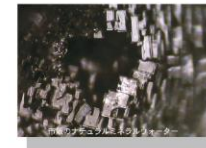
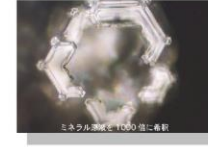
一定の形状がなく分類できないもの。



## 結晶の分類について

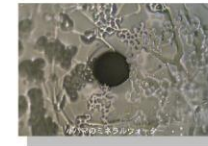
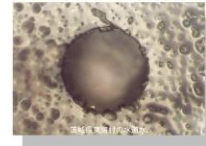
4-4

### Depression with crystals



### Depression

全く無く、かつ中心部が陥没しているもの。



### None

結晶が全く観察できないもの。

